

## WE CAN OFFER YOU

### Personalised help and support from our team every step of the way

With a dedicated Key Worker and a support plan designed especially for you.



The programme will help you understand your barriers to skills development, education and employment and support you with a personalised plan to overcome these barriers and reach your goals.

We understand that you may have multiple challenges which could prevent you from developing the skills and qualifications you need to find work or get into education.

We will work with you to develop a personalised plan to help address your barriers and support you every step of the way, at a pace you feel comfortable with.

We can also offer a variety of specialist support including:

-  *Mental health & wellbeing*
-  *Volunteering support*
-  *Debt & financial advice*
-  *Sponsored employment*
-  *Financial training & support*
-  *In-work support & guidance*
-  *Help with transport costs*
-  *Employer liaison support*
-  *Help with childcare & caring costs*

## Your Journey Starts Today

To register for the programme visit our website or give us a call. Once you have registered we will arrange for you to meet your Key Worker so you can get started on your journey towards skills development, education or employment.

### Contact Information



01380 732821



hello@buildingbridgessw.org.uk



www.buildingbridgessw.org.uk

Find us on social media:



@BBridgesSW



@BuildingBridgesSW

### Postal Address:

Building Bridges  
C/O Community First  
Unit C2 Beacon Business  
Centre, Hopton Park,  
Devizes  
SN10 2EY



Led by Managing Partner:

**COMMUNITY  
FIRST**

The Building Bridges programme is jointly funded by the Big Lottery Fund and the European Social Fund.



## Programme Information

# Your Journey Starts Today



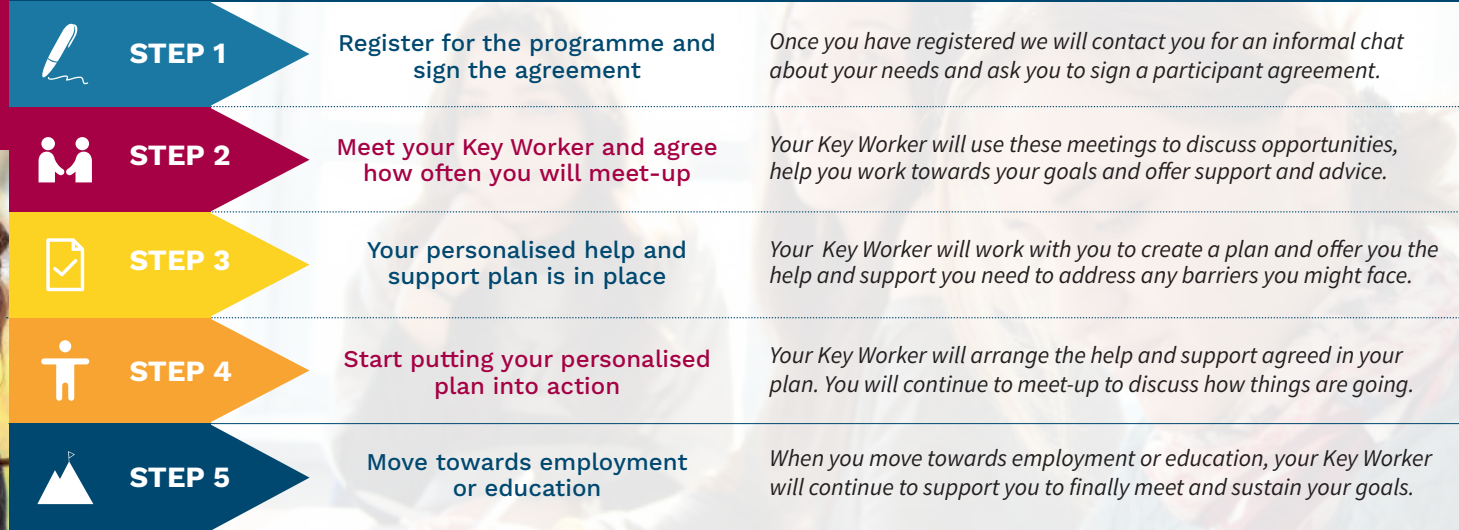
Helping people overcome their barriers to employment and education across Swindon & Wiltshire

# Welcome to the Building Bridges Programme

Your journey towards the world of work or education starts with us today.



## Programme Journey



The Building Bridges programme supports people across Swindon and Wiltshire who are facing significant challenges in being able to develop their skills, access education or move towards the world of work.

The programme is a partnership of local organisations with experience in supporting people and giving them the skills and confidence they need to move forward.



Taking part in the programme is **entirely voluntary** and all of the advice and support is offered completely **free of charge**.

### WHO CAN TAKE PART?

To take part in the Building Bridges programme you **must meet all** of the following criteria:

- ✓ Currently unemployed / not working
- ✓ Have the legal right to work in the UK
- ✓ Live in Swindon or Wiltshire
- ✓ Be aged 15 or over
- ✓ Not currently in Prison
- ✓ Not on a zero hours contract



### PROGRAMME FUNDING

The project has received £3.9M of funding from the European Social Fund and the Big Lottery Fund as part of the 2014-2020 European Structural and Investment Fund Growth Programme in England. The Department for Work and Pensions is the Managing Authority for the England European Social Fund Programme.



### REGISTER TO TAKE PART

You can register for the programme by visiting our website and completing a quick and easy form. You can also refer someone else to the programme:

[www.buildingbridgessw.org.uk](http://www.buildingbridgessw.org.uk)